

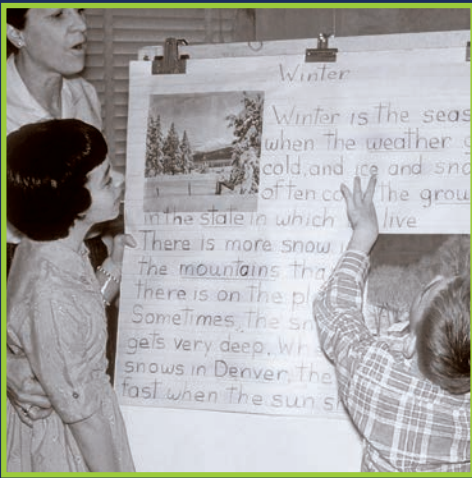
CELEBRATING

70
Years

SERVING COLORADO
SINCE 1946

ABILITY
CONNECTION
COLORADO™

Creating brighter futures through inclusion for 70 years!



EDUCATION

EMPLOYMENT

SUPPORT



FY 2015 Annual Report to the Community

ABILITY CONNECTION COLORADO



Society's understanding of disabilities has changed since 1946, and so has the work of Ability Connection Colorado. Some disabilities you can see, and some you cannot. Some disabilities are trauma-induced, and others occur prenatally. Whatever the disability, at Ability Connection Colorado, we see abilities. We see how connections improve lives. We focus on intervention and prevention to ensure that all individuals have an opportunity for a high quality life and are inclusive members of their communities.

The legacy of the founding mothers is an important part of Ability Connection Colorado's history. You have heard us tell the story of the nine mothers who in 1946 met to form a Mother's Club, because they refused to institutionalize their



children. Instead, they "dared to dream of a better life for their disabled children." The Mother's Club gave rise to what is now Ability Connection Colorado, 70 years later.

These founding mothers sought ways to pull their children out of isolation and into inclusion. They built more opportunities for engagement for their children through providing education, creating work opportunities, and bringing together "parents and friends throughout the state for assurance and guidance in the development of disabled children." They

sought to provide those with cerebral palsy and other disabilities ways to live quality lives and to "educate the public in the problems and possibilities for their improvement by every means available."

Historic photos hang in the halls of ACCO. Bricks from the original 1947 school are present in our lobby, and yet, it's the faces of the children and adults with disabilities that drive us. These faces inspire and remind us about the work that has been accomplished, and the work that is still left for us to do. We serve over 40,000 Coloradans each year, yet, there are so

many more in need of our services.

Inclusion in education and employment matters, and research has shown that everyone benefits, when everyone is included. Colorado families need support to access the resources necessary for their children to have an opportunity for a quality life. Together, education, employment and family support create opportunities and sustainable change for families across Colorado.

We are so thankful for an incredible community of supporters, who have climbed with us and helped us – and the more than 40,000 Coloradans whom we serve every year grow stronger. Together, we can do so much more!

Thank you for helping to carry on the legacy of these founding mothers, volunteers, builders, and supporters who

were "intrepid pioneers" – and "towering examples for all generations." We look forward to the next 70 years and hope you will continue to support the families and individuals we are privileged to serve.



EARLY CHILDHOOD EDUCATION

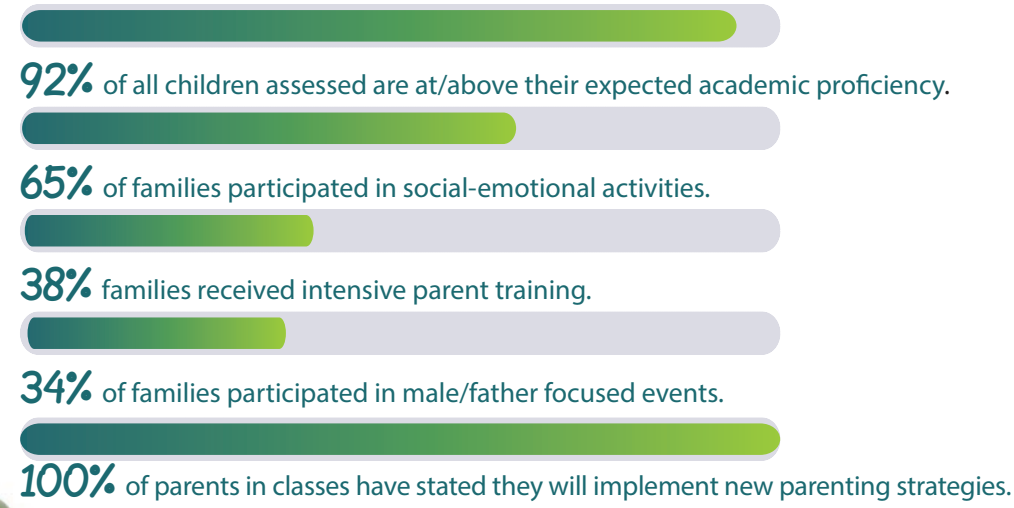
It's about their futures.

Early education is about creating opportunities to make it in life, whether you are first generation or third. It's about a community that embraces every child, ensuring they are not isolated, and removing the prejudice for disability so they can be successful – at age five or fifty-five. It's ensuring they are ready for school and ready for life.

Children of all abilities learn and thrive at all four (4) of our Creative Options Centers for Early Childhood Education. Our mission is to facilitate individual development for children through family support and a nurturing educational environment. Our focus is on each child's strengths, while promoting his/her social-emotional, cognitive, academic, communicative, and physical development.

Research shows that young children, who experience a high number of adverse childhood experiences, have a 90 to 100% chance of developing cognitive and physical delays. Our Creative Options Centers for Early Childhood Education, our developmental services and early childhood education minimize this risk and ensure Colorado children reach their greatest potential.

Notable Numbers:



Early Childhood Education Programs: 614 Served

Infants, toddlers and preschool children and their families receive early care, intervention, prevention, and other support and educational services.

We serve the entire family, not just the child, and provide the following professionals:

- Early Childhood Educators (Bilingual)
- Special Education Consultants
- School Readiness Coaches
- Mental Health Specialist
- Occupational Therapists
- Speech Language Pathologists and Assistants
- Family Coaches



EMPLOYMENT

Employment Works, for everyone.

It's about self-determination and self-sufficiency. Through the EMPLOYMENT WORKS program, we help ensure that all Coloradans have an opportunity to lead full and productive lives. With this program and with the determination of the individuals we serve, we have changed the face of employment. We have moved individuals into greater means of self-sufficiency – sometimes making the difference between living in poverty and without resources or becoming more independent and contributing to their own lives in more meaningful ways. This amazingly powerful program helps individuals participate more fully in life, become self-sufficient, and have greater success. It is important, it has impact – and it has changed the way people view those with disabilities. We now have communities embracing those who are differently abled and seeing them for the courageous, strong, and skilled individuals they are. That is success – and we have so many to thank for this. We appreciate your supporting of this program – and the thousands of Coloradans it serves – and changes.

Notable Numbers:

- 1,751** individuals received intensive case management.
- 3,019** individuals were served through the Social Security WIPA/BOND programs.
- 96%** of youth enrolled in the Ready to Achieve Mentoring Program (RAMP) have completed the course and successfully transitioned to the next grade or will be attending college in the fall.

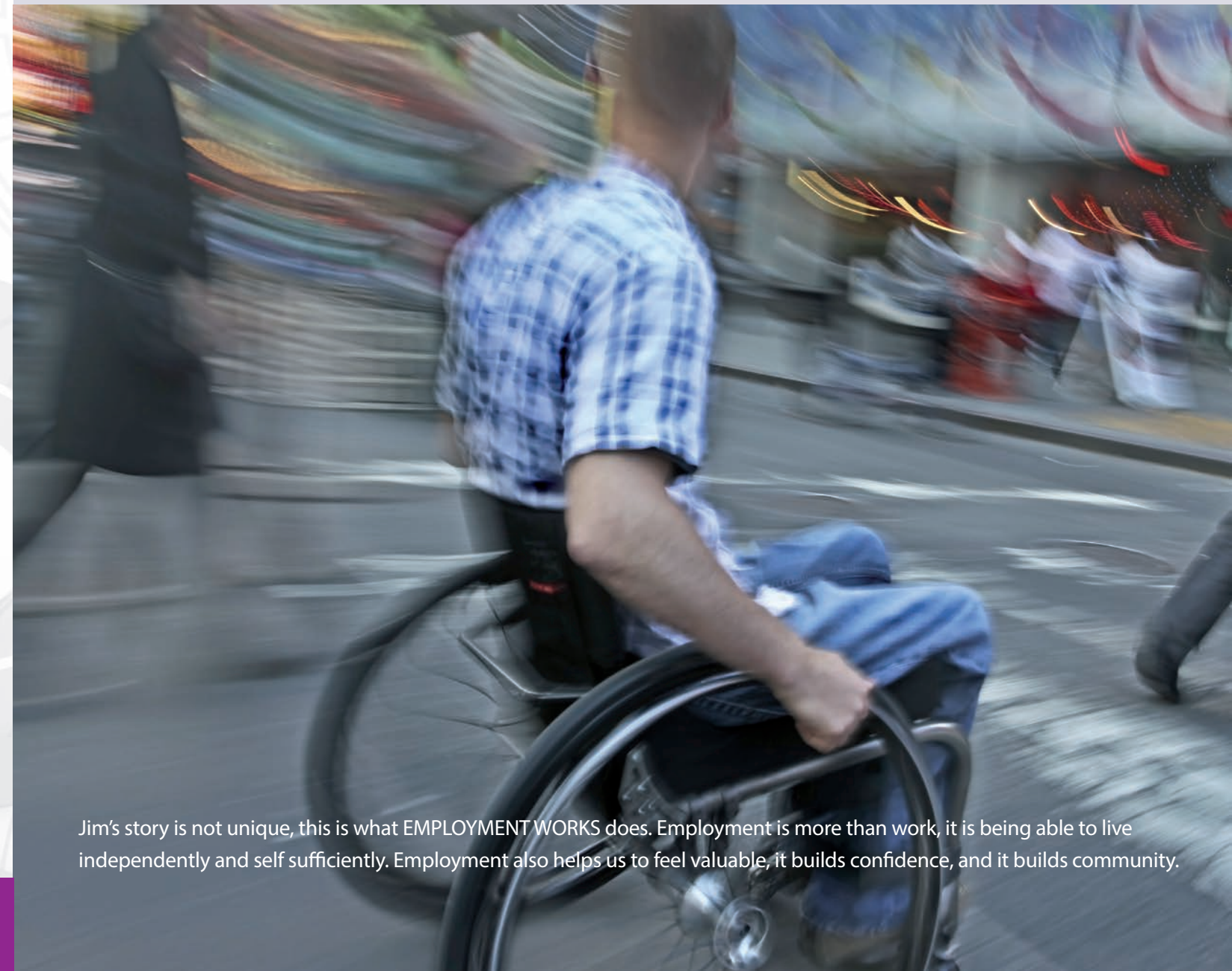
Employment Works Programs: 3,387 Served

Jim's Story

“ Because of my disability, I could only find work seasonally or with day labor companies. Thanks to Ability Connection Colorado, I have received training and coaching and secured employment that I find fulfilling. I feel part of society now. ACCO helped me integrate into the workforce, and ensured that I did not lose my disability benefits. I no longer feel isolated, I feel like I am a part of my community.

”

Jim, Employment Works Client



Jim's story is not unique, this is what EMPLOYMENT WORKS does. Employment is more than work, it is being able to live independently and self-sufficiently. Employment also helps us to feel valuable, it builds confidence, and it builds community.

STATEWIDE FAMILY SUPPORT

It's about providing the tools necessary to help families thrive.

Statewide Family Support Services' 5 programs helped struggling families advocate for their children and shared critical resources to help them thrive.

- **EMPOWER Colorado** provides support, education and advocacy for families of children of all ages with mental health issues. **5,325 Served**
- **Faith in Action** matches individuals with disabilities annually with supportive faith communities and volunteers to assist them with activities of daily living. **1,951 Served**
- **Guardianship Alliance of Colorado** (GAC) provides information assistance and coordination concerning guardianship, conservatorship and related matters for adults with disabilities who are unable to make their own legal or medical decisions. **6,108 Served**
- **Infantile Scoliosis Outreach Program** (ISOP) raises awareness in parents, orthopedic surgeons, their technologists and family practitioners regarding the availability and effectiveness of a life-saving, non-invasive, Early Treatment (ET) Process for infantile scoliosis, often resulting in a cure. **6,000 Served**
- **Parent to Parent** (P2P) provides emotional and informational support to parents of sons and daughters with special health care needs and disabilities. **13,189 Served**

Notable Numbers:

55,394 Number of volunteer hours contributed across all statewide family support programs.

Statewide Family Support Programs: 32,573 Served

Someone to talk to.

- “ I am thankful for the great network of other families. It makes such a difference to have someone to talk to who understands all the craziness that comes with our lives. I remember when my son was younger and I basically made it from day to day (still really do that) and how lonely it was. I hope other parents reach out to each other so the support is there when you really need it. ”

—Mother of a child with complex health needs.



THE ROAD AHEAD

Dear Friends and Families of Ability Connection Colorado,

It is with sincere thanks that we recognize a successful 2014-2015 fiscal year. Your support and ambassadorship enabled Ability Connection Colorado to serve 41,453 Coloradans last year. As a Guidestar best practice organization where .89 cents on every dollar directly supports the individuals and families served, Ability Connection Colorado has earned Colorado's trust for 70 years.

Ability Connection Colorado will celebrate its 70th birthday this year at our signature Mother's Tea event honoring the caretakers throughout Colorado. In recognition of our 70th anniversary, we have an ambitious year ahead of us.

- We will break ground on Creative Options #5 located at 13th and Peoria by the Fitzsimmons Medical Campus. This new early childhood education site will allow us to serve hundreds of families on our waitlist.
- We will expand our Employment Works Center and help create sustainable pathways out of poverty and isolation.
- We will create greater awareness for both seen and unseen disabilities, particularly those that are trauma-induced. Ability Connection Colorado will also streamline its mental health and socioemotional services to provide more comprehensive prevention and intervention strategies.

Together, we will work hard to address the issues facing Coloradans of all abilities. Together, we can do so much more.

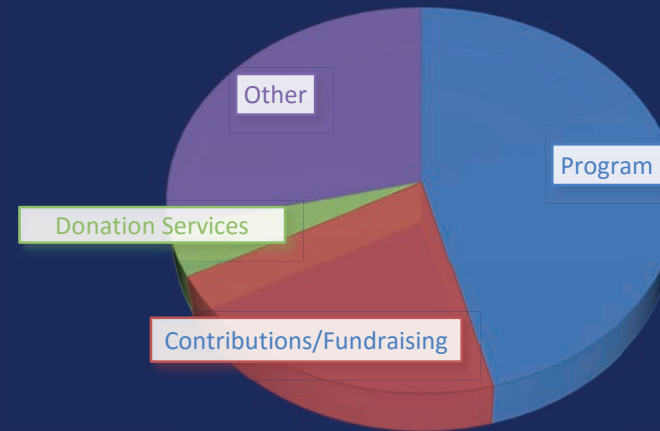
Sincerely,

Kathy
Kathy Higgins
Board Chair

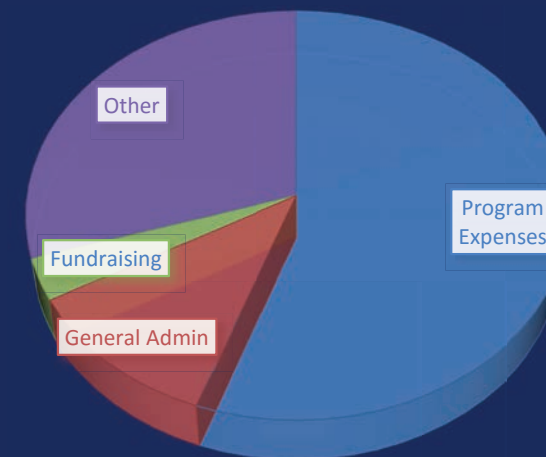
Judith
Judith I. Ham
President and CEO



FINANCIAL INFORMATION



Revenues	
Program	4,648,772
Contributions/Fundraising	2,140,139
Donation Services	423,491
Other	2,903,793
Total Revenue	10,116,195



Expenses	
Program Expenses	5,588,795
General Admin	1,140,334
Fundraising	333,912
Other	3,011,561
Total Expenses	10,074,602



THE LEGACY CONTINUES

The legacy of Ability Connection Colorado began with a few bold footprints forging a path where none had been before. In service of others, the path grows ever long and wide. Every bend and turn mark the way of thoughtful progress, as each new step fulfills the promise of the last and readies the next to follow. As our journey continues, we pay homage to the thousands who have helped us chart the course and to the thousands more whose help continues to pave the trail ahead. For all your support and generosity along the way, you have our deepest gratitude and thanks.

Foundations

\$100,000 - \$499,999

Daniels Fund
Temple Hoyne Buell Foundation
The Colorado Health Foundation

\$50,000 - \$99,999

Boettcher Foundation
The Denver Foundation

\$25,000 - \$49,999

Copic Medical Foundation
ECA Foundation
Mile High United Way
Sprout Foundation

\$10,000-\$24,999

RJ Clark Family Foundation
Union Pacific Foundation
The UPS Foundation
Virginia W. Hill Foundation

\$5,000-\$9,999

The Robinson Foundation

\$1,000-\$4,999

Grace Isabelle McNaught Trust
Merriman Family Foundation
Nelnet Foundation
Office Depot Foundation
Sam S. Bloom Foundation

\$500 - \$999

Community First Foundation
Gap Foundation
The Hyman Foundation
Schlessman Family Foundation

\$100 or less

Doctors For Health And Wellness Foundation
Gallo Family Trust

Companies/Organizations

\$500,000 and Above

Circle K

\$100,000 - \$499,999

Summit Daily News

\$50,000 - \$99,999

Qualistar Early Learning

\$25,000 - \$49,999

Dex Media
EnerCom Incorporated

\$10,000-\$24,999

All-Phase Concrete Construction
Group14 Engineering Inc.
Krystal 93
McDonald Automotive Group
National Association for the Education of
Young Children

\$5,000-\$9,999

TCBY Yogurt
UPS
Vail Resorts

\$1,000-\$4,999

Arapahoe Community College
Behavioral Healthcare, Inc.
Colorado Rockies Baseball Club
Denver Life Magazine / Elevation Media
Dillon Ridge Liquors, Inc.
FirstBank Holding Company
Noble Energy
SM Energy

\$1,000-\$4,999

3R Racing Auto
Adolfson & Peterson Construction
Aggreko
Alpine Bank
American Armored Transport, Inc.
ASI Signage Innovations
Bank of America Employees
Barrett-Jackson
Basic Energy Services
Bill Barrett Corporation
Bourland and Leverich Supply Co.
Burlson LLP
Calfrac Well Services
Cameron
Captain Canopy & Company
City Wide Maintenance of Colorado, Inc.
Classic Investments Inc.
Colorado Fund for People with Disabilities
(CFPD)
Colorado Professional Fire Fighters
Colorado State Bank & Trust
Colorado State Patrol
Complete Business Systems of Colorado, Inc.
Concord Energy, LLC
Conesco Storage Systems, Inc.
DaVita
Denver Fire Fighters Local 858
Denver Firefighters Protective Association
Ebert Appraisal Services

Electronic Shooters Protection
Elements Massage
EnCana Corporation
Ferrari of Denver
Fidelity Charitable Gift Fund
Fox Rothschild LLP
Halliburton
Harmonic Media
Harvey Operating & Production Company /
Intrepid Potash
Higgins and Associates
Hudson Auto Source
Hyder Construction
InterLynk Communications
James S. Muniz Agency, Inc.
Jazz Car Wash & Detailing
Kenny Electric Service
Kone Elevator
Lakewood Electric Company, Inc.
Liberty Oilfield Services
Liberty Waste Management
Linn Operating, Inc.
Littleton Fire Fighters Foundation & Association
Local No. 2086
Man Cave Colorado
McJunkin Redman Corp.
Mecum Auctions
Mike Ward Maserati
MTech Mechanical
Nabors Corporate Services, Inc.
PASCO
Pason Systems USA
PDA Road Gear
Peak Resources, Inc.
Pivot Accounting, LLC
Porsche Club of America - Rocky Mountain
Region
PRAMS Plus, LLC
RaceKraft & Design
Resolute Natural Resources
Retriever Software, Inc.
Robert Half International
Rocky Mountain Chapter of the BMW Car Club
of America
Rocky Mountain Eurosport
Sill-TerHar Motors, Inc.
Sprinkle & Associates LLC
St. James Evangelical Lutheran Church
Stratcom Advisors LLC
Tres Bella, Inc. DBA Avalon Aveda Salon & Spa
United Seating & Mobility
US Bank

Walmart
West Metro Firefighters IAFF Local 1309
Westerra Credit Union
Willbros Engineering
Wynkoop Brewing Co.

\$500 to \$999

A Perfect Setting Catering
Audi Car Club of North America - Rocky
Mountain Chapter
Breckenridge Brewery
Cabot Oil & Gas Corporation
CenturyTel, Inc.
Colorado Clays
Colorado Rural Health Center
Coors Distributing Company
Core Laboratories
Corvette Connection and Performance
Dawson Geophysical Company
Denver Auto Body & Paint
Denver Tux
Diversified Radiology of Colorado, P.C.
Energy XXI Services. LLC
EuroWraps
Extreme Autoworks
James R. Hudson Trust
Kroenke Sports Enterprises
M. A. Mortenson Company
ManCaves / Broncos Pkwy Partners
MoDaZz
Nationwide Insurance
Patxi's Pizza
PDC Energy
Pediatric Speech Therapy Associates
PetroQuest Energy, Inc.
Plan Sharp LLC
Range Resources
RASR Productions LLC / Telluride Festival of
Cars & Colors
Recycle America Alliance LLC
Renewal by Andersen
Rocky Mountain Jaguar Club, Inc.
Samuel Gary Jr. & Associates, Inc.
Shield Health Care
Storz Garage, Inc.
The Shelby American Collection
The Steward's Solera Bourbon, Paradise
Distribution Company LLC
Unit Corporation

\$100 - \$499

Adams Industries
AdvocacyDenver
American Heritage Restoration

Art Wearables, Inc.
Arvada Professional Firefighters Association
Local 4056
Atlantis E & P Services, Inc.
Baroness Wines - Ole Imports
Beaver Creek Resort Company
Beverage Distributors
Bird Rock Imports
BTO Highlands Ranch LLC
Camden Riversharks
Cimarex
Classic Wines
CNS Medical Group, PC
Colorado Golf and Turf
Colorado Junior Karting Club LLC
Colorado Physician Health Program (CPHP)
Comedy Works
Constellation Wines
Contemporary Painting LLC
CTS Distributors
Denver Marriott Tech Center
Don's Garage Doors Inc.
Edgen Murray
Elite Brands of Colorado
Estate Brands Distributing Company
Estate of Elizabeth M. Calabrese
General Air Service & Supply
Grand Vin
Greenwood Pediatrics, P.C.
Harold E. Lemay Museum dba Club
Auto Colorado

Hyatt Regency Tech Center
Icebox Delights / Buck Baloo Kettle Corn
Ignite Performance
Law Office of Claire E. Dineen
Lost Coffee Truck
Lundquist Associates
McManus Industrial
Montgomery Little & Soran, PC
Mountain Beverage/New Belgium Brewery
Nexus Capital Finance
Performance Mobility
Pinnacle Distributing
Precision Drilling
PSE Partnership Inc.
Pug Ryan's Brewery
Renaissance Denver Hotel
Republic National Distributing Company
Rest Assured Inc.
Rise Above Colorado
Robin Event Rental
Rocky Mountain 356 Porsche Club
Rocky Mountain Health Plans
Rocky Mountain Saab Club
Romano's Italian Restaurant
Roth Estates
Shelby American Automobile Club
South Metro Professional Firefighters Local 2164
Southern Wine and Spirits
St. Catherine Greek Orthodox Church
Standard Sales
Sullivan Ventures; Loveland Pass Liquors
Synergy Fine Wines
Terra Nova Wines
The Bistro Bus
The Westin Tabor Center
Valley Country Club

Vehicle Vault Co
Veraison Beverage Distributors
Westin Denver Downtown
Whirl Colorado LLC
Winslow Crane Service
Z Car Club of Colorado

\$99 or Less

Adam's Mystery Playhouse
BMW Car Club of America
Castle Pines Day Spa
Cat Care Society
Ehlers Corvette Parts
Karen Brady & Associates
Louis F. Materre Ins. Agency Inc.
Purifoy Chevrolet
ReadyTalk
Reaffirm, Inc.
Reincarnation Auto.com
The Inverness Hotel and Conference Center
The Melting Pot

Individuals

\$25,000-\$49,999

Judy and Bud Ham
Brian K. and Kelli Fisher
Barry Rosenberg

\$10,000 - \$24,999

David W. Copeland
Ronald C. Knoebel

\$5,000 - \$9,999

Jim Brown
Randy and Patty Caton
Bill and Liz Stenzel

\$1,000-\$4,999

David and Marian Ballins
Terry and Sharon Barrett
Sarah Buffum
James and Pam Callender
Darwin and Deborah Campbell
Matthew and Jacquelynn Casper
Carol Core and Mark Shaffer
Edward and Carol Dauer
Mr. Nicholas J. Doran
Richard A. and Bernadine Hoffschneider, Jr.
Martha and Gene Hurd Linder
William Lyons
Kathleen Jenkins and Mike McDonald
Lindsey and Kathleen Ma
Rodney Mann
Rick and Linda Morud
John and Betty Ann Moyski
Nathan Nosari
James A. and Carolyn O'Donnell
Valerie S. Pool
James Reuter
Dianne Rundell
The Estate of Donald C. Schwartz in memory of
Sandra J. Schwartz
Michael and Michelle Simms
Dennis and Debbie Stovall
Kevin Vollmer
Marvin and Pamela Weinstein
Karen C. and Jeffrey Wenzel
Don and Karen White

\$500 - \$999

Gail and Jane Allaman
Diane Ament
Marian D. Ankrim
Bennett H. Biever and Howard Weil
Clay and Edie Boelz
Cheryl Bruno
Mark and Lori Carlson
Steven R. and Kathleen Corneillier
Laura D'Ardenne
Daniel Doyle
Doriana R. Fontanella
David A. Helmer
Dale Heter
William Joseph and Carol Horam
James Knight
Kathy Latham
Robert J. And Norma Lewis
Don and Sandra Marlin
Jeffrey and Kathy Mather
Stephanie McCay
Denny McGihon
Ken Mendelsberg
Janet Monahan
Ken and Jan Monahan
Stephen and Jan Nevers
Kamil Petrik
Keith and Margaret Platte
Dale and Gail Poledna
Doug and Lisa Reese
James Robertson
Steve and Karen Saliman
Mike and Margaret Smith
Ron and Elizabeth Shoeman
Steven and Loraine Summer
Penfield and Paulette Tate III
Jim Teter
Jim and Brenda Traynor
Salman Wakil
Grant Wilson

\$100 - \$499

Gary and Natalie Abbott
Tilman Adair
David Adams
Syed and Amber Ahmed
Wendell Akins
Chad Alder
Michael Aldridge
Willa S. Allen
Cathryn L. Allison
Kristi M. Alpers
Omaris and Adrian Ankrim
Richard Antl
Craig Atkins
Nancy M. Babich
Allen Bacher
Joseph Bachmann
Brent Banholzer
Tony Banks
Michael Barajas
Dulaney V. and Sarah Barclay
Victor Barcot
Michael Bartlett
Brooke Beck
Kenneth Beer
James E. and Valerie Beetham
Evelyn Begley
Ted Behrens
Larry and Cheryl Bena

Rosanne Benoit
John A. and Marjorie Berman
Rick and Dixie Berman
Mietra Beyer
Brad Blinder
Robin Bolduc
Joe and Karen Bolis
Travis Bonifacio
Patricia Bontempi
Jean Marie Boyer
Karen Brass
John Brellenthin
Liz Breuer
John Brewer
Brian Brooks
Jenna K. Brovsky and Jeffrey J. Jezek
Kara L. Brovsky
Cameron Brown
Damon Bullock
Tracy Burke
Brian Caddell
Dennis and Janet Callan
John and Donna Campanella
Carlton Carl
Dana Casper
Sandia Caulkin
Bridget Cavanaugh
William R. and Jean Cecil
James Cesak
Charles Chambers
Ben Chaney
Linda Christie-Horn
Dana Clark
Steve Clark
Nathan Cleveringa
Carol and Roger Coke III
Andrew Coleman and Raymond James
James V. and Candice Constat
James B. and Joanne Conway
James Cook
Claude Corkadel III
Nancy Cowen
Bart Cox
Patrick Curnalia
Christopher D'Ambrosio
Robert R. and Jan Davies
John Davis
Walter Deason
Dave Debronkart
Nancy Delucia
Hague Des
Robert E. and Julie Donohue
Tamara Dougherty
William Gordon Douthat
Tobie R. Dreiling
David Dunton
Lambert G. and Karen Durel
Sandy Dycus
Christine Ebert-Santos
John Eckberg
Winston Elliott
Steve and Kim Ellis
Dan Entingh
Kyle W. and Erica Evans
Rose Fagan
John Fair
Suzi Fallon
Meredith Farnum
Megan Fearnow
Paul Felix

Jason Flury
Desmond Foley
Jaime Foster
Mary Franden
Patricia D. Franklin
Christopher Freeman
George and Heidi Frey
Ronald Frohlick
Geraldine R.C. Frohne
Peter A. and Rhonda Fronczak
Jeremy Funk
Barbara Ganong
Sandip Garg
Jonathan Garrett
Gerald B. and Margaret D. Gavenda
Deward Gerdom
Leslie Elizabeth Gerhardt
Jane H. and Ronald Gibbs
Kim Gilbert
Nancy K. Gilmore
Elaine B. and Edward Goldman
Whitney Gomila
Cynthia Gordon
Henry Gordon
Amy M. Goscha and Terry R. Williams
Jennifer A. Graham
Michael Grant
Daniel Green
William J. and Karen Green
Julie Greenwald
Jon Gregory
Hank Grey
Peter Grundberg
Doris C. Gundersen
David Hanse
Terry Harron
Pat Hart
Randy and Tracy Hart
Barry Hawkins
Kimberly Hawks and Phil Dilks
Angela Heggland
Olivia Hesse
Bruce and Deborah Hill
Donald Hill
Jerry F. and Mary Ellen Hofmann
Paul D. And Dianne Holscher
Jerry Hosemann
Elizabeth and Timothy Hough
Robert Howard
Bonnie Howe
Elizabeth Hudson
Charles E. Huffman
Kyla Isaac
John Jalbrzykowski
Kelly B. Jarzabek
Christopher Jenner
Douglas Garth Jensen and Singfoong Cheah
William Jochetz
Ben Johnson
Tracy P. Johnson
Stephen C. and Kristi Jumper
Richard and Debra Kahn
David A. Kamm
Jerry Kappler and Jan Phillips
Edward Kearney
Michael Kelly
Stephen Kennedy
Cathleen King
Charles H. and Janice Kirkpatrick
Christina Kitchens

Beverly Kizer
David and Caroline Koehler
Barbara Komdat
The Kopelman Family
Gabriel Koroluk
Carol Koth
Leon Kouns
Doug and Cory Kraft
Art Krasny
David F. and Dena Krenik
Mark and Jane Kutner
Charles and Carolyn Lamar
Bruce Lamberson
Rosemary Lamberson
Kevin Lammers
Jill Lanman
Donald N. Leach
Michael LeBourgeois
Jim and Kathleen Leiser
Heather LeMay
Alan M. Lembitz
Tiffani Lennon
Linda A. Lichtendahl
Christian John Lillis
Katrina Lopez
Richard and Joy Luedemann
Edward H. and Eugena Lyons
Chad Mabry
Mary and Markian Macke
Juliana Maes
Diane Magarelli
Jacob Malocha
Thomas A. and Jenifer Malott
Lisa Manning
Jaqueline Marincic
Kerri Marsh
Janice and Jan Martin
Ruth Martinez
David B. Mayer
Frederick "Rick" M. and Melanie Mayer
Christian McCarter
Karen McCoy
Mr. Richard McDonald
Julie G. McDowell
Jeremy P. McKamey
George McKean
Lynne and Tim McMahon
Sarah McMahon
Kevin and Mary McNicholas
Earl McNeil
Patricia Meester
Denise Merillat
Breanna Metcalf
Oleg Metsaev
Adam Michael
Gretchen and A. Todd Miller
Susan T. Miller
Tatsiana Miller
William E. Miller
David Mills
Jeanette Montoya
Linda Montoya
David Mooney
Sara Morgan
Aimee Motta
Jane L. Myers
Jenifer Nichols
Michael Nocerino
Ryan Nuanes
Robert O'Brien

Phyllis O'Grady
William O'Malley, Jr.
Peter Pampalone
Ted Parks
Aaron and Amber Parmet
Brian and Jennifer Peitzmeier
Ryan and Megan Peitzmeier
Robbie Person
Kim R. Phelps
Jacqueline Phillips
Todd Phillips
Kristy Pigott
Kathleen Potter
Ed Praskiewicz
Mary Quare
Edward Quayle
Steve Quintana
William N. Raftery
G. William "Bill" and Donna Raynor
Clifford Rees
James J. Reiss III
Damon Renner
Jody Reuler
Timothy and Maryellen Rezvan
Renee Rice
Susan Richards
Jill Ridley
Ron Rizzuto
Jeff and Karen Roberts
The Rosenberg Family
Debra Roche
Margaret Roll
Chris Rosson
Christine Russell
Gerry Russell
William M. Russell
Alexander Ruus
Daniel Saman
Albert Santiago
Gurpreet Sawhney
Joann L. Schauer
David Scott
Barbara Seacrest
Florence and James Seccombe
Ambreen Shah
Steven Shapiro
Carl Shellenback
Peter Shen
Diana Shepard
Stephen Sherick
Dianne Shipley
Tenlee Shoffstall
Carol B. and Michael Silvestain
Danny Simmons
Lynn Skall
David and Patricia Skolnik
Courtney Smith
Greg Smith
Jason Smith
Patricia Smith
Dennis M. Snow
Edith D. Sonn
John S. Southern
Sara Morgan
James Spicer
John and Reta Staffeld
Jeff Stapleton
Travis Stice
Lisa M. Stieber and Samantha Dudley
Jon Strader

Sierra L., Sierra and Nick Summerville
Nancy J. Surdovall
James and Christy Swoll
David Tameron
Susan Teves
Susan Thompson
William Thompson
Sharon and Jon Thorson
Sara Tisdale
Kay Tormey
Daniel W. Trathen
Luc A. Trudel
Emily Trujillo
Matt Ultis
Luis Vaca
Aaron and Natasha Vandeford
Lorie Varnas
Kent and Kelli Varney
Hayes H. Veeneman
Paul Veralli and Sandy Heikal
Jerry and Cynthia Vergatos
Joseph A. Terry Vilardo
Jody Reuler
John and Renee Walbert
Sandra Walling
Shelley Ward
Beth Lamberson Warren
Robert and Christine Wester
Gary Wilson
George Wilson
Adrien Winger
Margaret Roll
Rich L. and Carmelita Wohl
David Wood
Patricia Ragsdale Wright
Varayuth Yenbaeroong
Nicolette Yoder
David L. and Mary Young
Sara Young
Shannon Zimmerman
Dennis A. Zubieta
Ron Zuzovsky

\$99 or Less

Jemila Adams
Shawn Allison
Harold and Ada Anderson
Marcia Deines Andersen
Will and Becky Allen
Richard J. and Patricia Angelo
Devin Anthony
Terri L. Armstrong
Maria Avina
Bob Axtell
Benjamin Aycrigg
Suzanne Bailey
Ken and Wendy Balcerzak
Michael Ballard
Joseph Ban Jr.
Richard "Dick" L. Bartlett
Travis Beal and Hillary Patterson
Andrea Beaman
Renee Beaugregard
Norman and Donna Bell
Maureen Bennett
Damon and Kelly Bergman
Stephen R. and Ellen Berlin
Robert Bernthal
Roger W. and Ann Biddison

Larry G. and Christine Blanco
Kenneth A. Blenker
Beate Maria Boecker
Charles Booth
Paul Bottone
Anne E. Brack
Pat Bresnahan
J. Brent and Evamarie Brewerton
Brandon Browning
Travis C. Broxton
Jodi Buchan
Gordon C. Buckner
Greggory D. and Joan G. Carnicello
Elaine C. Carpenter
James Carr
Carol T. Ceelen
Steven S. and Stefanie Chambless
Lucy Allen Chapman
Guadalupe Chavira
Michael Chrisinger
Sherry Clancy
Thomas Clausen
Jacob Colao
Steven L. Cole
Cindy L. Colwell
Melissa Connor
Beth Contreras
Phillip Cordova
LaRon Cosley
Peter G. Cranston
Russell Daniel
Gerald "Jerry" Danner
Terry Dargevics
Joseph J. and Cynthia Dascher
Coral Lee Davidson
Gloria Davis
Michael Davison
Janis De Baca
Roger Delucia
Dennis Devore
Diana Dice
Carol and Charles Dolby
Lorraine Hall Dominguez
Donald Dominick
Ronald and Jeanne Dorr
Patrick and Kathleen Driscoll
Dave and Vickie Drotts
Erin Ellis
Allen R. and Velvet Entz
Mark Espenship
Charles Esralew
Steve Evans
Tristan and Elizabeth Farel
Sherie Farstveet
Jessica Fassbinder
Kent L. and Nancy Ferguson
John and Kathy Fieber
Jasmin Fonggrasin
Sharon Edith Foote
Jorge and Pauline Fumagalli
Kevin Gaffney
George and Amy Gajate
Mary Beth Galer
William Garbe
Antonia Garcia
Manuel D. Garcia
Lewis Getschel and Ms. Susan Blumberg
Deon Gillespie
John Gonzalez
Robert Green

Douglas Grogan
Michael Grota
Joe and Cathy Gunderson
Bruce and Laura Guthals
Susie Q. Hahn
Lisa Hake
Linda H. Halfar
Jeff Hall
Karen Hammond
Tracie A. Hammons and Nelson Giesecke
Ed and Kathy Hansen
Charles B. Harper
Nancy Hart
George Hartmann
M. Sharon Harvel
Malcolm and Becky Hassler
Chris L. and Laura Heath
Marjorie A. Herweyer
Tom Hewett
Elton Lee and Connie Hill
Deanna Hines
Beverly A. and Gary Holmes
Gary Hopkins
Thomas and Mary Gail Horan
Francis and Lorena Houchen
Jamie Hughett
Adam Hulse
Jack Humphrey
Marcel Hunter
William E. and Susan Hurt
Maria Jabalera
William Jackson
Christopher Jensen
Remola Johnson
Thomas G. and Nonnie Johnson
M. Adaline Jyurovat
Bart Kaminsky
Erica Kannelly
Andrew Katz
Sarah Kelley
Janis Kelly
Sara E. Kennedy
Stimson R. Kennedy
Fred C. Kiekhaefer
Kathy Kinskey
Brent and Martha Kirkpatrick
Randall Kirmse
Kelly Klemmer
Lawrence Kloberdanz
Daniel and Grace Koda
Lori Koehler
Vicki and Jeff Krieger
Eric Kronebusch
Kathleen Kuper
Daniel Kuskie
Paula D. Labossiere
James W. Lachenmaier
Susan Langley
Robert A. and Anastasia Lawhead
Angela Leath
Elizabeth Lehman
Montie and Cindy Lehman
Cathy L. Lines
Robert and Shuku Little
Patricia Litz
Brendan Loveday
Sherry and Ruel Lovell
Carrie Ann Lucas
Louise Lucas
E. Victoria MacGill

Rita Madzi
Alma Marquez
John and Arlene Martin
Jan Masse
Jill Mather
Katharine I. Matthews
Lawrence Mayers
Sheryl McGinnis
Gina McGrail
Lori Medina
Steve P. and Katherine Meier
Howard G. and Robin L. Mendelson
Susan T Miller
Fred C. and Kathleen Minister
Leslie Moffit and Michael Sears
Betty Montoya
Carol J. Moore
Hugh Morrow
Jeffrey Morrow
Andy Mortenson
Charles Mulhall
Gloria and Raiko Johnson
Rosemary Moya
Renee Muldoon
Brian Myers
Tina Naylor
Alex Negel
Robert Nellums
David Nelson
Lisa Newcomb
Warren J. and Irene Oakes
Flor Ochoa
Steve O'Brien
Diana Oehler
Maria Victoria Opari
Evelyn Osborne
Robert H. and Karen Ottesen
Carol Pacheco
Lori Parker
Jennifer Paulino
Heather Pegram
Flint Pennington
David Perez
Marsha Pitter
Fatima Prieto
Annie Putz
Daniel T. and Kathleen Radetsky
Hanni Raley
Maria Ramirez
Mike Ramirez
Charles Randles
Joseph M. and Amelia Ratcliff
Carey Reigan
John and Nancy Reilly
Allen Richardson
Marvin R. Richardson
Douglas and Amy Rittenberg
Tom and Sandi Robben
Stephen Robertson
Peter A. and Lynn Robinson
Kerry Ross
Richard and Valerie Saiz
Tawni Scaccia
Sandra K. Scherer
Robert J. and Eiko Schiffman
Lou Ann Scholl
Steven Schulte
Tracy Schwartz
Bob Scott
Clay Scott

Diane Scott
Valerie and Charles Scott
Monica Segura-Bunch
Victoria Seligman
John G. and Valerie Semich
Stacy Shealy
Ashleigh Short
Michael and Mary Silvestain
Julie Simonds
Mark Skrotzki and Nancy Crow
Thomas Smidt
Marla Smith
Mary J. Smith
Moya Smith
Norm Smith
Wes Spera
Lili S. Stahlman
Robin Stephens
Cindy A. and Robert Stevens
Julie Stoxen
Michael Swartz
Michael Swenson
Frank Sullivan
Yu-Shan Tai
Janet Tang
Lloyd and Anne Taylor
Jeanne Teske
Sally Testrake
Lewis Thomas
Nicole Thomas
Sharon L. Thompson
John Threats
Patrick Toland
Roland P. and Carole Tomsick
Jenny Treanor
Robert Unfug
Tara Van Loenen
Alicia Vargo
Albro D. and Elinor Vrooman Jr.
Peter Wagoner
Paul and Donna Walder
Carolyn E. and Darrell Wallisch
Myron and Priscilla Walter
Kathrine Warren
Timothy C. and Roxanne Wasmer
Sharon Wells
Safia Welty-Rupe
Tamara Wendt
Ivette Werner
Frederick and Sally Wheeler
George A. Williams
Anna Wilson
Cynthia Wintersgill
Michael and Ann Wolf
Jude Wolpert
Neil Worley
Rosemary Wright
Ailsa Wu
Charles R. Younger
Ben Zatz

Please accept our apology if we have inadvertently omitted anyone from this list.

Board of Directors

Officers

Kathy Higgins, Chair of the Board
President, EHS Management Solutions, Inc.

Penfield Tate, Vice Chairman
Attorney, Greenberg Traurig, LLP

Brian Fisher, Vice Chairman
Conesco Storage Systems, Inc.

Marty Hurd, Treasurer
Vice President-Employee Benefits

Pamela L. Weinstein, Secretary
Community Member

Board Members

Krista K. Bielat
Early Education Advisor

Russell Scott Bisbee, Parts Consultant
Stevinson Chevrolet

Edward A. Dauer, Attorney
Dean Emeritus and Professor of Law

Colleen Forst
TCBY President and Owner

Katia Arreola
PFCC Representative

James Reuter, Past Chairman of the Board
President, FirstBank Data Corporation

Honorary Board Members

Mike Smith
Owner Dillon Ridge Liquors

Margaret Smith
Parent Auxiliary

President and CEO

Judith I. Ham
Ability Connection Colorado, Inc.

OUR VISION:

To live in a community that includes, accepts, and celebrates the abilities and contributions of all individuals.

OUR MISSION:

To support Coloradans through innovative and comprehensive early childhood education, employment, and family support programs.



**ABILITY
CONNECTION
COLORADO™**

Serving People with DisabilitiesSM